

A division of CIRCOR International, Inc.

## 7300 Series Quarter-Turn Plug Valves

The Hoke 7300 Series Plug Valve provides full flow or leak-tight shut off with just a quarter turn. The 7300 is recommended for use in applications where instant on-off and visual flow indication is essential. Its safe, reliable top- loaded design allows throttling of fluids and thru-port rodding of the valve. The simple design provides easy maintenance and extends valve life.

### Features

#### • *Dual retaining rings*

- Straight through orifice
- Straight through bore
- Handle shape
- 90° On-Off
- Throttling capabilities
- Oval trip-proof handle
- Low operating torques

### Benefits

#### • *Allows handle removal with blowout-proof plug*

- Full flow
- Allows rodding through body
- Indicates flow direction
- Quick actuation
- Won't damage seat seal
- Prevents inadvertent actuation
- Ease of operation

### Specifications

Maximum Operating Pressures:	<ul style="list-style-type: none"> <li>• 3000 PSIG (207 BAR)</li> <li>(200 PSIG (14 BAR) with vent option)</li> </ul>
Maximum Reverse Operating Pressure:	<ul style="list-style-type: none"> <li>• 1000 PSIG (69 BAR)</li> </ul>
Maximum Operating Temperature Range:	<ul style="list-style-type: none"> <li>• -65° F to +425° F (-54° C to +218° C)</li> <li>(Depending on o-ring material)</li> </ul>
Orifice:	<ul style="list-style-type: none"> <li>• 0.093" (2 mm)</li> <li>• 0.187" (5 mm)</li> </ul>
C <sub>v</sub> (maximum):	<ul style="list-style-type: none"> <li>• 0.12 and 0.74</li> </ul>

405 Centura Court  
Spartanburg, SC 29303  
tel 864-574-7966  
fax 864-587-5608  
www.hoke.com  
hoke@circle-seal.com

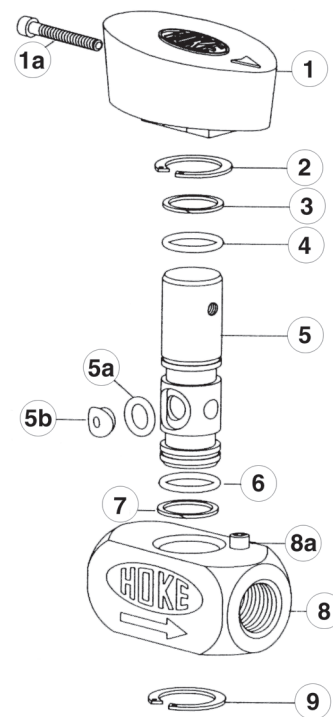
# 7300 Series

## Quarter-Turn Plug Valves

### Materials of Construction

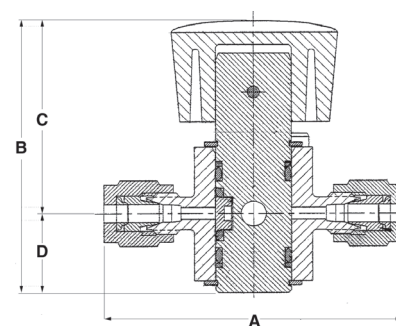
	Component	Material	
		316 Stainless Steel	Brass
1	Handle	Nylon	
1a	Handle Screw	316 Stainless Steel	
2	Retaining Ring	15-7 PH Stainless Steel	
3	Back-up Ring	TFE	
4	O-ring	Viton®	Buna-N
5	Plug *	316 Stainless Steel	Brass
5a	O-Rings*	Viton®	Buna-N
5b	Retainer	PEEK™	
6	O-ring	Viton®	Buna-N
7	Back-up Rings	TFE	
8	Body *	316 Stainless Steel	Brass
8a	Body Screw	18-8 Stainless Steel	
9	Retaining Ring	15-7 PH Stainless Steel	

\* Wetted component



### Dimensions Inches(mm)

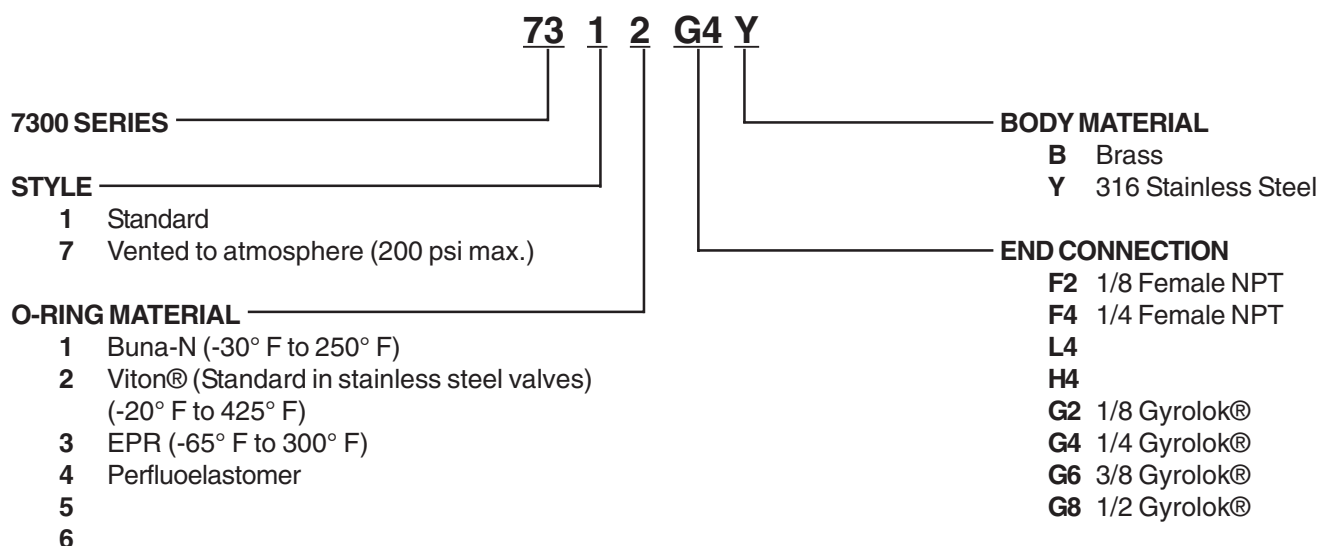
End Connections	Part No. Stainless Steel	Part No. Brass	Orifice	Cv	A	B	Body Width
1/8 Female NPT	7312F2Y	7312F2B	0.187	0.74	1.90 (48.3)	2.00 (50.8)	1
1/8 Gyrolok®	7312G2Y	7312G2B	0.093	0.12	2.20 (55.9)		
1/4 Female NPT	7312F4Y	7312F4B	0.187	0.74	2.10 (53.3)		
1/4 Gyrolok®	7312G4Y	7312G4B	0.187	0.74	2.37 (60.2)		
3/8 Gyrolok®	7312G6Y	7312G6B	0.187	0.74	2.50 (63.5)		
1/2 Gyrolok®	7312G8Y	7312G8B	0.187	0.74	3.08 (78.2)		



# 7300 Series

## Quarter-Turn Plug Valves

### How to Order



### Options

#### Down Stream Vent

Down stream vent allows down stream pressure to be relieved to atmosphere through a small hole in the body.

To order, replace the third digit with a 7.

Example: 73[7]2 G4Y (vented)

200 psig (14 BAR) maximum operating pressure

#### Rebuild Kits

**SP 7300 K1** includes the Viton® o-rings, retainer, retaining rings and PTFE back-up rings.

**SP 7300 K3** includes the 316 SS plug.

#### Colored Handles

96159-030 = Red

96159-031 = Blue

96159-033 = Green

#### For Your Safety

*It is solely the responsibility of the system designer and user to select products suitable for their specific application requirements and to ensure proper installation, operation, and maintenance of these products. Material compatibility, product ratings and application details should be considered in the selection. Improper selection or use of products described herein can cause personal injury or property damage.*

PEEK™ is a trademark of Victrex PLC.

Viton® is a registered trademark of DuPont Dow Elastomers.