

HOKE® 0300 SERIES
air operated bellows valves

The 0300 series valve is designed for applications where critical leak-tight integrity and cleanliness are required. The valve can be used for both automatic or remote operation. Two basic valve sizes meet most flow requirements. For sampling or injection of special gases into main process streams, specially designed T Pattern Valves are offered.

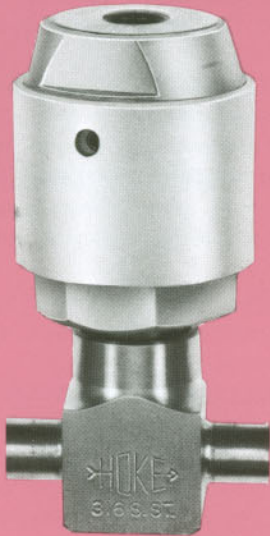
APPLICATIONS

High Purity/Hazardous Gas Distribution Systems such as Semiconductor, Fibre Optic and R&D processes requiring High Vacuum performance and Low Particulate Generation.

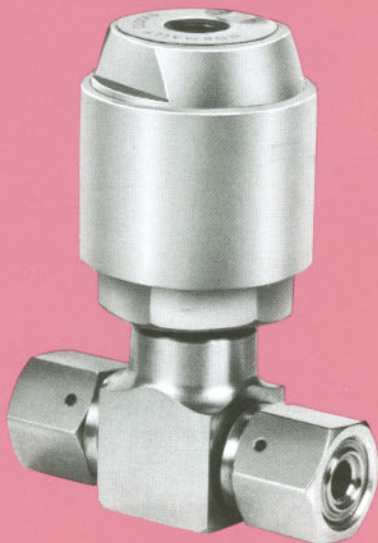
For use with Diffusion Furnaces, Epitaxial Reactors, Gas Panels Purge Systems and Gas Cabinets where control/analysis of sensitive gases is conducted.

FEATURES

- Operates with low air pressure and volume.
- Low dead space.
- Reliable shut-off.
- Long cycle life insures years of maintenance free operation.
- Compact design saves space in panels.
- Replaceable Kel-F seat increases valve life.
- Normally closed (NC) or normally opened (NO) models use the same air entry position.



0361N4Y3



Valve Technical Data	0364 Series	0374 Series	0363 Series	0371 Series
	N/C	N/O	0361 Series N/C	N/O
Operating pressure -psig	Vacuum to 200	Vacuum to 350	Vacuum to 200	Vacuum to 350
Operating Temp. - °F	-40 to +250		-40 to +250	
Orifice - inch	.281		0.170	
CV	.86		0.28	
Dead Space - cu. in. approx. (end to end of body)	.16		.08	
Helium Leak Test - Envelope max. - Seat Max.	.0005 MCFH 5.2 x 10 ⁻⁹ scc/sec		.0005 MCFH 5.2 x 10 ⁻⁹ scc/sec	
	.001 MCFH 1.04 x 10 ⁻⁸ scc/sec		.001 MCFH 1.04 x 10 ⁻⁸ scc/sec	
Basic material	316 SS		316 SS	

Operator Technical Data	
Operator Air Pressure - psig	150 max.
Operator Ambient Temp. - °F	-20 to +20
Basic Material	Aluminum

Flow Pattern	Orifice	End Connections	Size Inlet x Outlet	Order by Catalog Number	
				Normally Open	Normally Closed
Globe	.170	1/4 Gyrolok	1/4 x 1/4	0371G4Y	0361G4Y
Globe	.170	1/4 Female NPT	1/4 x 1/4	0371F4Y	0361F4Y
Globe	.170	1/4 Socket Weld or 3/8 Butt Weld	1/4 x 1/4 3/8 x 3/8	0371N4Y3	0361N4Y3

Other end configurations available on special order. Consult factory for delivery.

MATERIALS OF CONSTRUCTION FOR VALVE

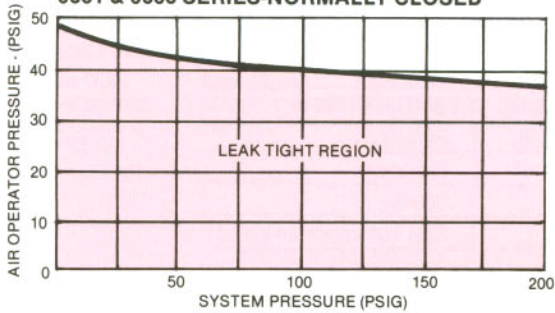
KEY	DESCRIPTION	MATERIAL
1	Vaculok Glands	316L
2	Stem Tip (Replaceable)	Kel-F
3	Gasket (Bellows to Body Seal)	Kel-F
4	Body	316SS
5	Bellows	316SS
6	Stem	316SS

MATERIALS OF CONSTRUCTION FOR AIR OPERATOR

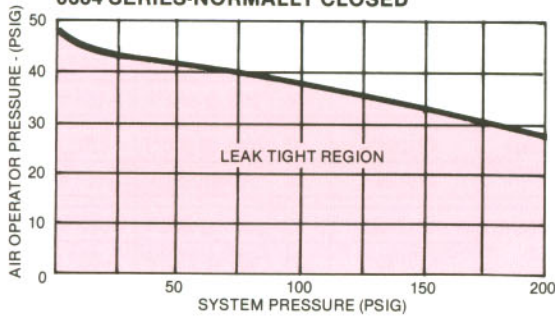
KEY	DESCRIPTION	MATERIAL
7	Diaphragm	Fairprene
8	Bonnet	Anodized aluminum
9	Diaphragm Plunger	303SS
10	''O'' Ring Seal	Buna-N
11	Body	Anodized aluminum

AIR OPERATOR PRESSURE VS. SYSTEM CRACKING PRESSURE

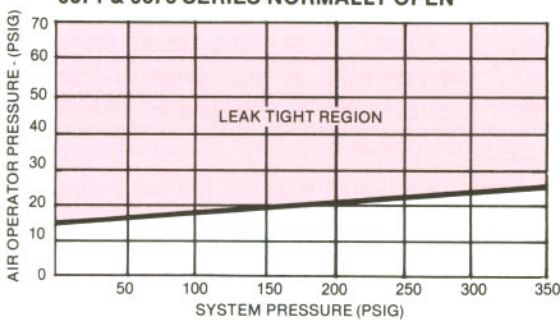
0361 & 0363 SERIES-NORMALLY CLOSED



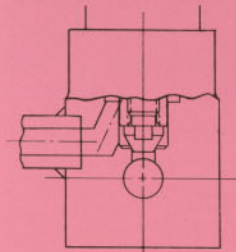
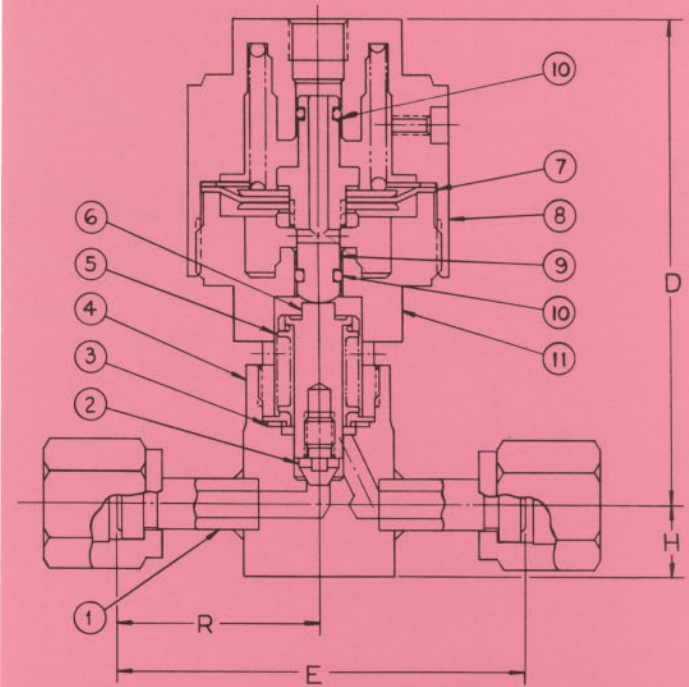
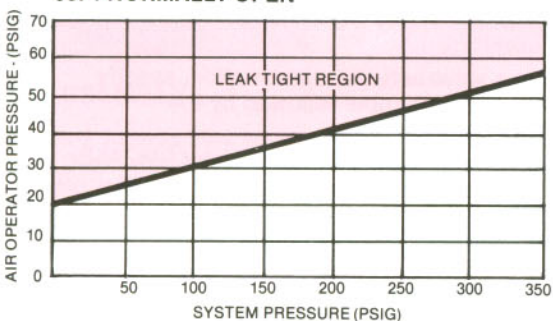
0364 SERIES-NORMALLY CLOSED



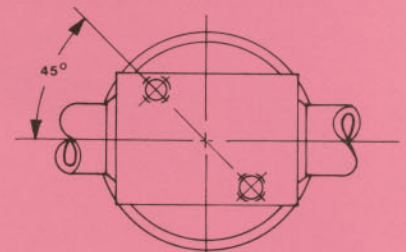
0371 & 0373 SERIES-NORMALLY OPEN



0374-NORMALLY OPEN



TEE PATTERN



BASE MOUNTING

Model No.		D	H	E	R	Base Mounting
0361G4Y 0371G4Y	inch	3 1/4	1/2	2	1	2 Mounting Holes - 10-32UNF-2B Thd. on 1" Bolt Circle
	mm	83	13	51	25	
0361F4Y 0371F4Y	inch	3 1/4	1/2	2	1	
	mm	83	13	51	25	
0361N4Y1	inch	3 1/4	15/32	1 11/16	27/32	
	mm	83	12	43	21	